



# FEATURES DOCUMENT

Published on: January 7, 2022

Version 1.0



Prepared by

Technical Writing Team, Spiralogics, Inc.

## Table of Contents

|   |          |
|---|----------|
| <b>1. Application Description .....</b> | <b>1</b> |
| <b>2. Features.....</b>                 | <b>1</b> |



## 1. Application Description

SpiralogicsPlus is a mobile-based application developed in Xamarin. The main purpose of the application is to log hours in work items of the assigned projects. Along with it, all the projects assigned and daily logs can also be seen.

## 2. Features

The following are the features of SpiralogicsPlus application.

- i. Login is done through the user's **Microsoft account using Azure AD.**
- ii. The default screen displays the **Work Items** of a particular project.

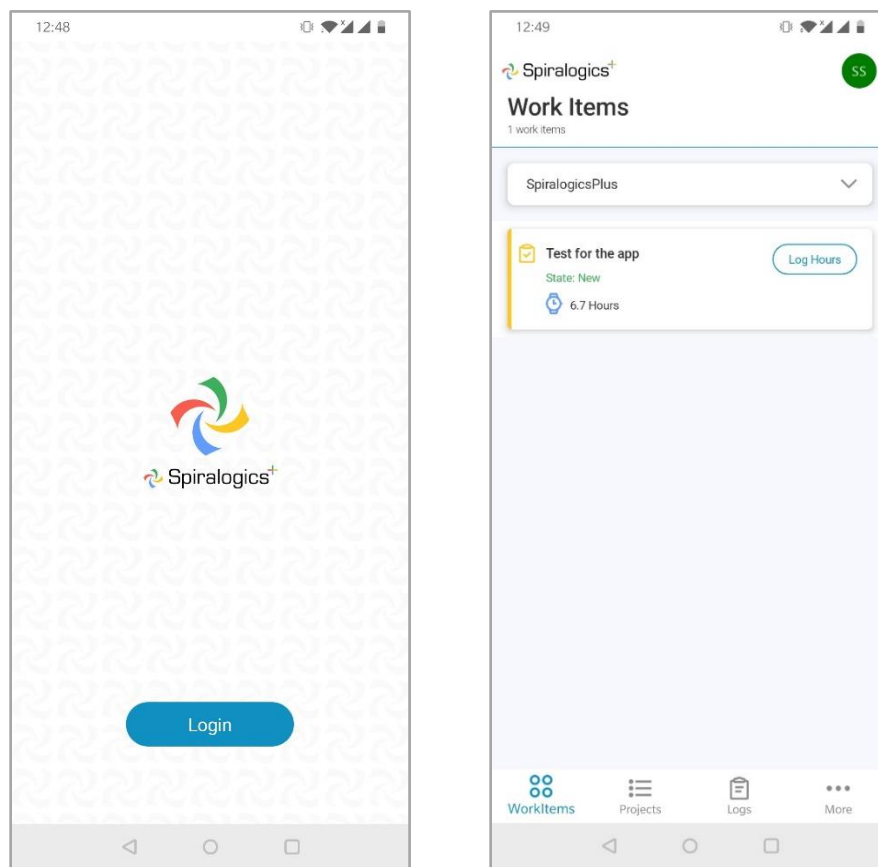


Figure 1: Login & Work Items Page

- iii. To the right most corner, either the **image** of the user or the **initials** of the user can be seen.
- iv. On click, the **User Profile** details can be seen.

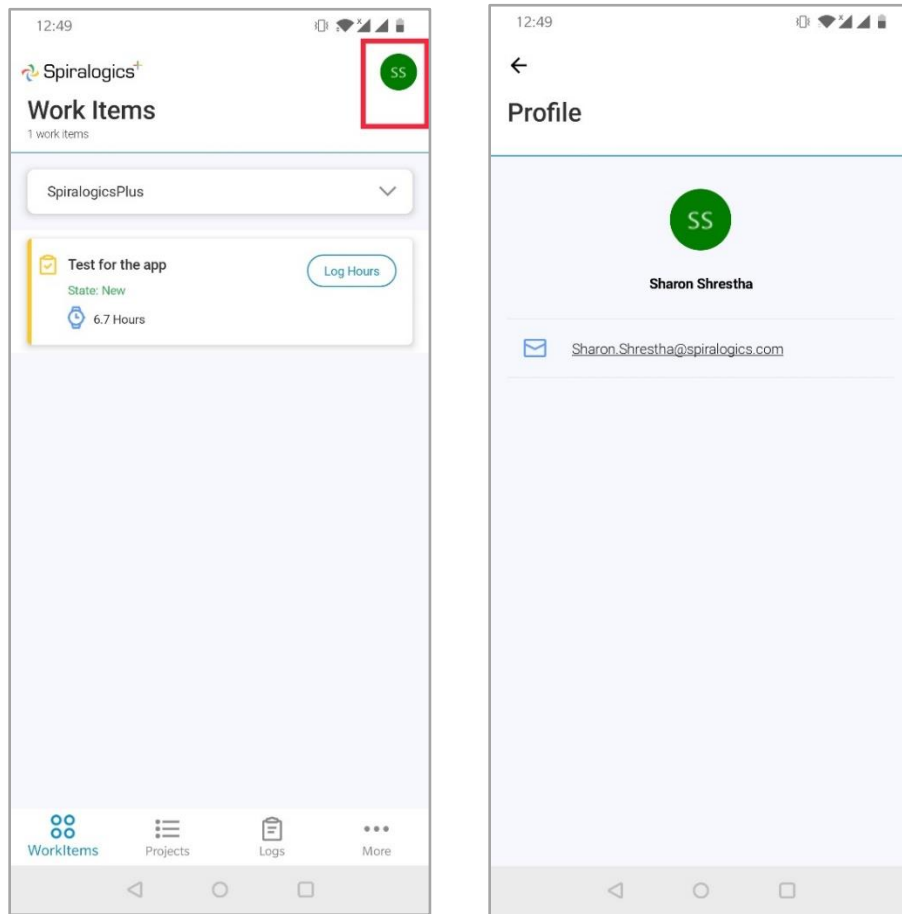


Figure 2: User Initial & User Profile Page

- v. Drop down for project list can be seen.
- vi. Select a project from the drop down.
- vii. After a project is selected from drop down, its work items displayed.

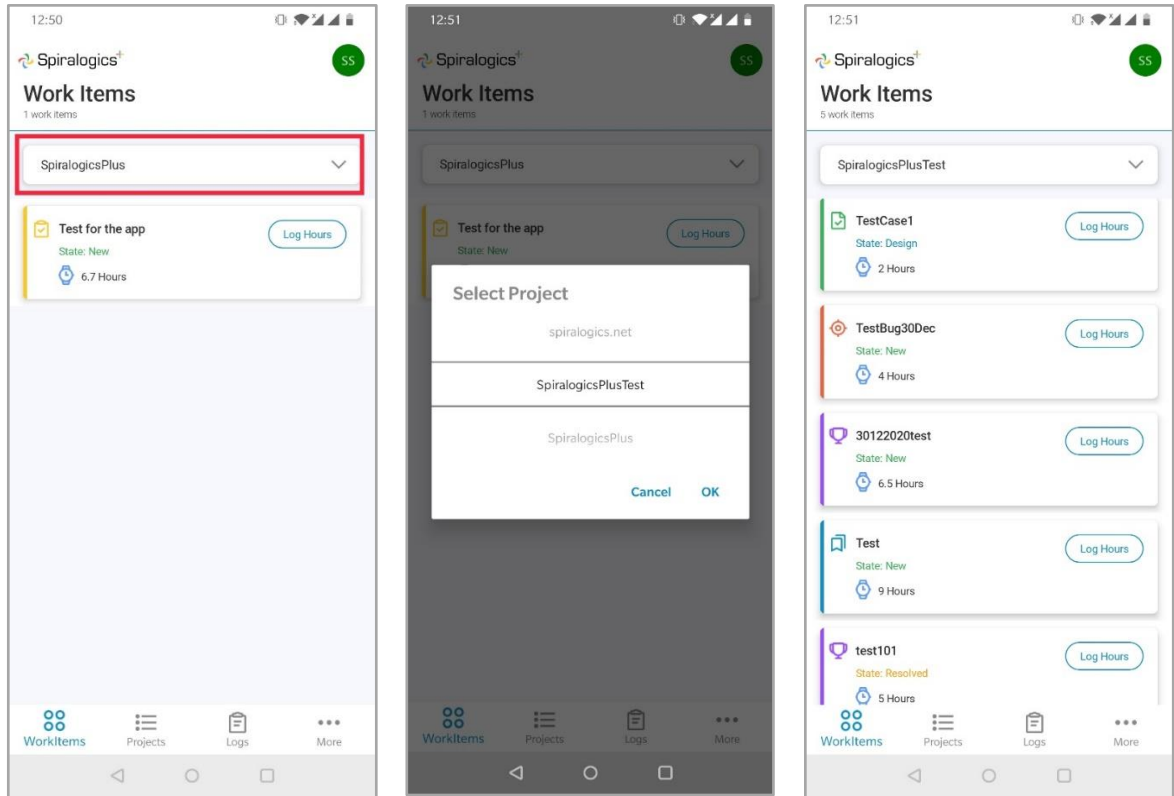


Figure 3: Project Dropdown, Select Project Dropdown, Work Items based on selected Project

- viii. The user can then log hours in the particular work item they have been assigned.
- ix. Form to log hours in work item can be seen when log hours is clicked.
- x. Number validation is done in the form.

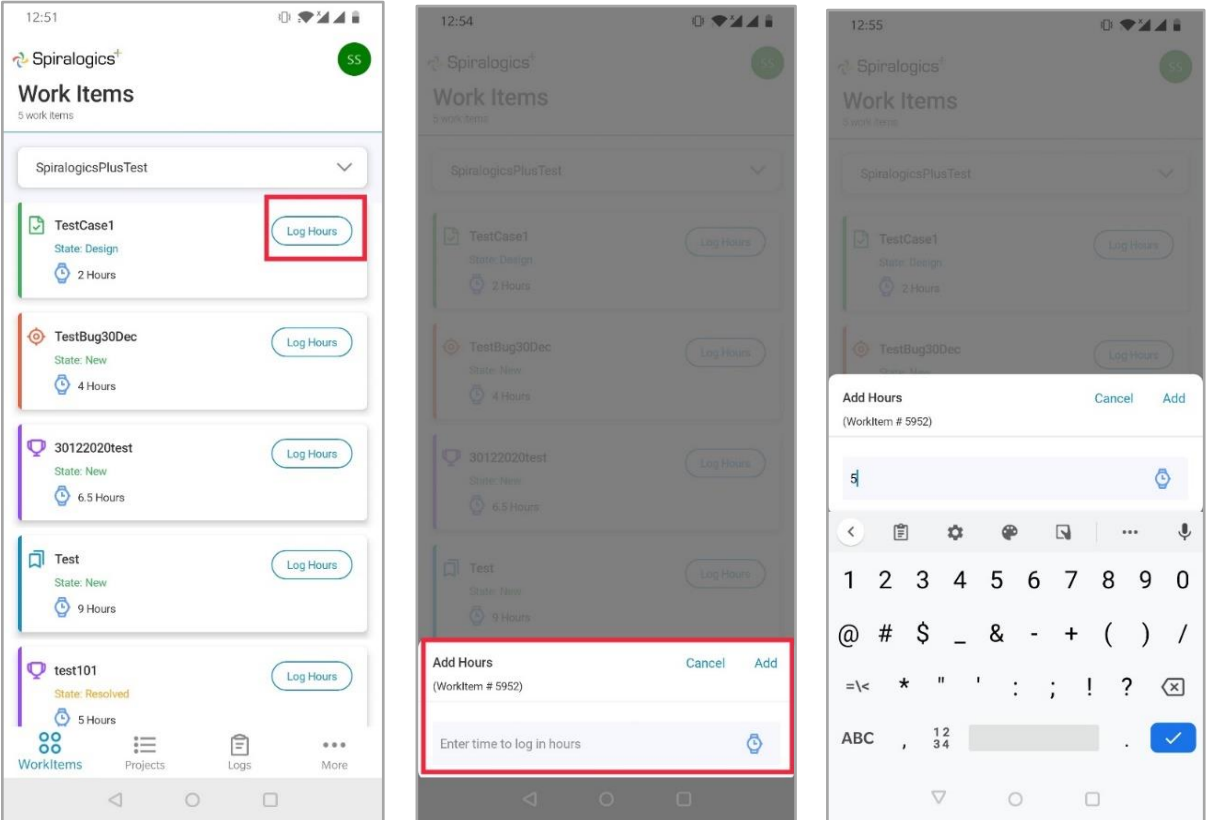


Figure 4: Log Hours Button, Add Hours Form, Number Validation for Form

- xi. Addition of hours through the **Log Hours** form.
- xii. A **message** is popped up after successfully logging hours.

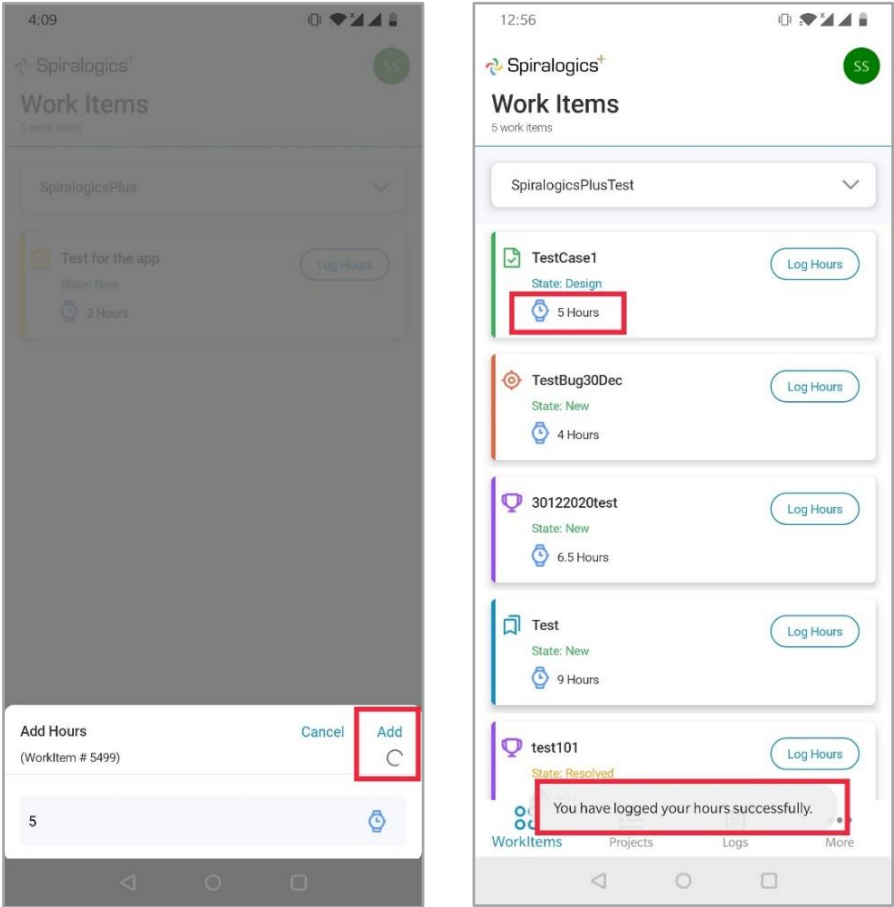


Figure 5: Log Hours Form and Success Message for Hours Logged

xiii. **Projects** tab displays all projects the user is currently working on. Projects can be displayed either in grid view as shown in screenshots below.

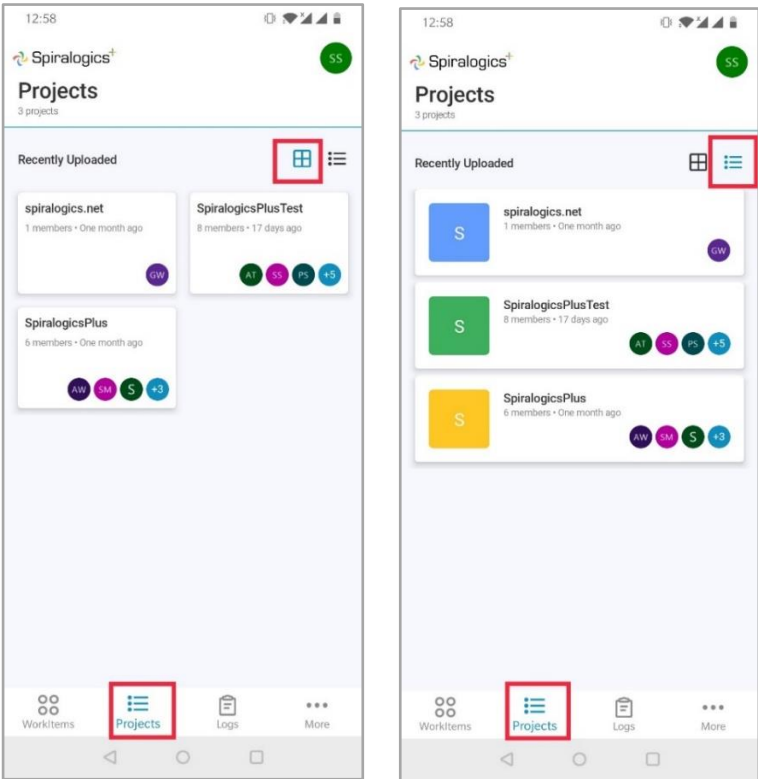


Figure 6: Project Grid View Styles



- xiv. When a project is selected, the project details such as **project information** and **project members** is displayed.

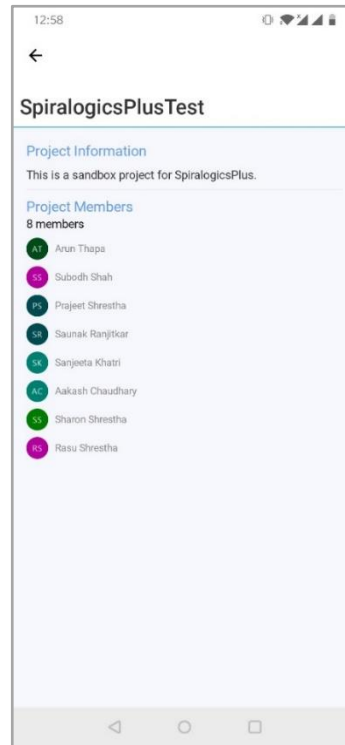


Figure 7: Project Information & Members of selected Project

- xv. **Logs** tab shows the logged hours of 30 days from the selected date of a particular project. Projects can be selected from the dropdown and date can be selected from the date picker.
- xvi. **More** tab comprises of About Us and Sign Out options.

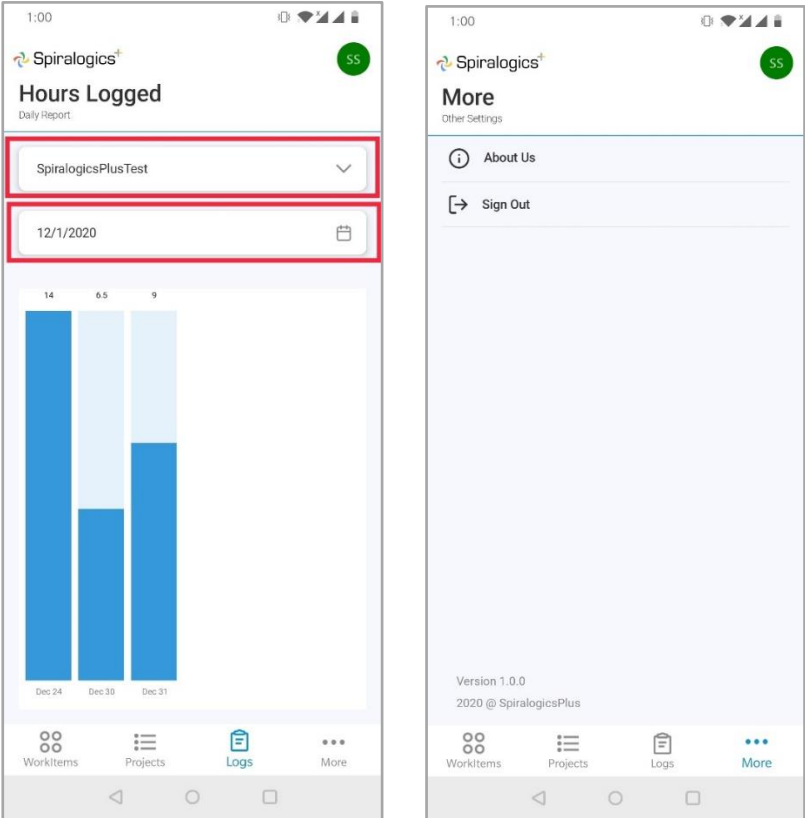


Figure 8: Hours Logged Tab & More Tab